



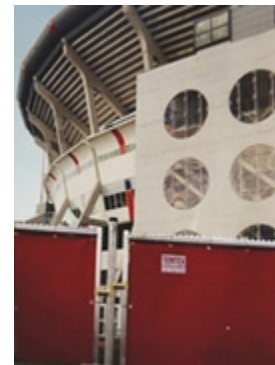
Technical fabrics & accessories

1/13

Temtex™ fabrics are temperature-resistant fabrics, from 100 gram/m² to 2000 gram/m², either in loom state, caramelized or treated with specialist solutions/coatings, such as silicone, poly-urethane, alu-foil and high-temp treatment, to enhance their physical properties.

Temtex™ fabrics are made from non-hazardous continuous-filament E-glass fibres (or silica fibres) and are suitable for temperatures up to 1000 °C. General applications for **Temtex™** fabrics are removable insulation covers, welding/spark protection, compensators/flexible connectors, personal protection, filtration of aluminium and steel, and fire-proof screens.

In addition to the technical fabrics we also supply a wide range of accessory materials: sewing threads, (quilting)tacker, mattress-hooks and plates, staples, lacing hook sets, buckles, knit-mesh, etc..



Pyroglass glass fibre tapes, sleeving, seals and rope lagging are suited for use in the domestic and industrial heating appliance manufacturing industries. **Pyroglass** products show superior handling and thermal characteristics and are resistant to oils, most chemicals and solvents.





Temtex™ technical fabrics

2/13

Fix weavelock (FIX)

“Fix” weavelock, based on silicic acid, ensures low inflammability (self-extinguishing), good cutting characteristics and resistance to abrasion. Applications: Fire protection, 'Lagging' fabric and Covers for fibrous insulation.



200/FIX

A lightweight glass fabric treated with a “weavelock”.
Weight: 200 gr/m².



420/FIX

Glass fabric treated with a 'weavelock'
Weight: 430 gr/m².



600/FIX

Glass fabric treated with a 'weavelock'.
Weight: 600 gr/m².



800/FIX




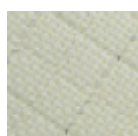
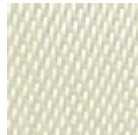


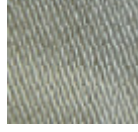
Glass fabric treated with a 'weavelock'.
Weight: 800 gr/m².





Temtex™ technical fabrics





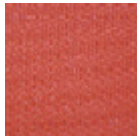


3/13

<p>Loomstate (LS) Applications: Fire protection, Reinforcement fabric, Cover for fibrous insulation, 'Lagging' fabric, etc..</p>	
<p>200/LS A lightweight fiberglass with a smooth, closed structure Weight: 200 gr/m².</p>	
<p>420/LS Loomstate 'Marine' glass fabric. Weight: 430 gr/m².</p>	
<p>600/LS A light loomstate 'Check'glass fabric. Weight: 600 gr/m².</p>	
<p>660/LS A loomstate 'Atlas' glass fabric. Weight: 660 gr/m².</p>	
<p>800/LS A heavy loomstate 'Check'glass fabric. Weight: 800 gr/m².</p>	
<p>T400/LS Untreated (toweling) texturised glassfabric. Weight: 400 gr/m².</p>	
<p>660/V4A/LS Satin-weave glass fabric, stainless steel reinforced. Weight: 660 gr/m².</p>	



Temtex™ technical fabrics

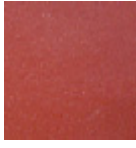
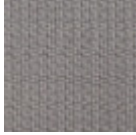
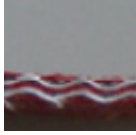
4/13

<p>Silicone Coated (SR/SG/SGT) Glass fabric coated with a flame retardant, chemical resistant silicone rubber coating. Applications: Insulation mattresses, smoke curtains and welding shields.</p>	
<p>420/SG1 Marine glass fabric, one side coated with a flame retardant, chemical resistant silicone rubber coating. Weight: 510 gr/m² (coating: 80 gr/m²).</p>	
<p>420/SG1 100 gr. Marine glass fabric, one side coated with a flame retardant, chemical resistant silicone rubber coating. Weight: 530 gr/m² (coating: 100 gr/m²).</p>	
<p>420/SG1 - Econ Marine glass fabric, one side coated with a flame retardant, chemical resistant silicone rubber coating. Weight: 490 gr/m² (coating: 60 gr/m²).</p>	
<p>420/SR2 "Compensator" glass fabric, both sides coated with a silicone coating; non-fraying, good resistance to abrasion. Weight: 760 gr/m² (coating: 115 gr/m²).</p>	
<p>420/SG2 Marine glass fabric, two side coated with a flame retardant, chemical resistant silicone rubber coating Weight: 570 gr/m² (coating: 80/60 gr/m²).</p>	
<p>420/SG2 - Econ Marine glass fabric, two side coated with a flame retardant, chemical resistant silicone rubber coating Weight: 540 gr/m² (coating: 50/60 gr/m²).</p>	



Temtex™ technical fabrics

5/13

<p>1050/SR1 "Compensator" glass fabric, coated with a silicone coating on 1 side; non-fraying, good resistance to abrasion, with good fluid and gas tightness. Weight: 1500 gr/m² (coating: 450 gr/m²).</p>	
<p>1050 SGT2 A "Compensator" glass fabric, coated on both sides with a protective, fire retardant, chemical resistant, grey silicone, finished with a transparent silicone layer. Weight: 1700 gr/m² (coating: 350/350 gr/m²).</p>	
<p>T950 Silply Two layers of flexible woven glass fabric, vulcanized to each other with silicone and coated on both sides with a silicone coating; non-fraying and good resistance to abrasion. Weight: 3200 gr/m² (coating: 1300 gr/m²).</p>	



Temtex™ technical fabrics

6/13

PU Coated (PG)

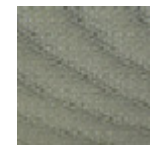
1 or 2 side coated with flame retardant polyurethane. Applications: Insulation mattresses, spark-/welding protection, flexible joints, smoke screens etc..



420/PG1

"Navy" fabric with a protective, fire-resistive, aluminium pigmented coating on two sides; abrasion resistant, non-fraying and economical.

Weight: 440 gr/m² (coating: 20 gr/m²).



600/PG1

A "check-weave" fiberglass fabric, with a protective, fire-resistive, aluminium pigmented coating on one side; abrasion resistant, non-fraying and economical.

Weight: 620 gr/m² (coating: 20 gr/m²).



660/PG1

"Atlas" glass fabric, on one side coated with a protective, aluminium pigmented coating; abrasion resistant, non-fraying and economical.

Weight: 685 gr/m² (coating: 25 gr/m²).



660/PG2

"Atlas" glass fabric, two sides coated with a protective, aluminium pigmented coating; abrasion resistant, non-fraying and economical.

Weight: 710 gr/m² (coating: 50 gr/m²).



660/V4A/PG1

Satin-weave glass fabric, stainless steel reinforced, with a fire-resistive, aluminium pigmented coating on one side.

Weight: 665 gr/m² (coating: 25 gr/m²).





Temtex™ technical fabrics

7/13

Alfol / Alpes

Glass fabric with a protective, highly reflective and fire-resistant aluminium foil. Applications: insulation mattresses, spark-/welding protection, protective clothing.



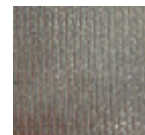
200/ALFOL

"Navy" fabric with a protective, highly reflective and fire-resistant aluminium foil on one side.
Weight: 250 gr/m² (alu foil: 50 gr/m²).



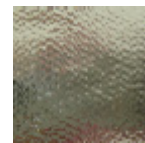
420/ALFOL

"Navy" fabric with a protective, highly reflective and fire-resistant aluminium foil on one side.
Weight: 465 gr/m² (alu foil: 45 gr/m²).



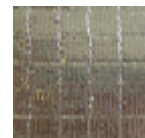
420/ALPES

"Navy" glass fabric, on one side coated with a polyester foil with vaporised aluminium.
Weight: 510 gr/m² (coating: 90 gr/m²).



600/ALFOL

Square weave glass fabric with a protective, highly reflective and fire-resistant aluminium foil on one side.
Weight: 670 gr/m² (alu foil: 70 gr/m²).



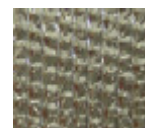
800/ALFOL

Heavy square weave glass fabric with a protective, highly reflective and fire-resistant aluminium foil on one side.
Weight: 870 gr/m² (alu foil: 70 gr/m²).



T2000/HT700/ALFOL

Heavy texturised glass fabric with a protective, highly reflective and fire-resistant aluminium foil on one side.
Weight: 2130 gr/m² (alu foil: 130 gr/m²).





Temtex™ technical fabrics

8/13

High Temperature

High temperature treated fabrics. Applications: heat protection, insulation mattresses, compensators, welding-protection.



220/SIL/V

Non-flammable silica fabric for applications with high temperatures till ca. 1000 °C (without mechanical loading).

Weight: 220 gr/m².



600/SIL/V

Non-flammable silica fabric for applications with high temperatures (till ca. 900 °C).

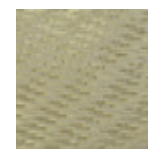
Weight: 600 gr/m².



1100/SIL/V

Non-flammable silica fabric for applications with high temperatures (till ca. 900 °C).

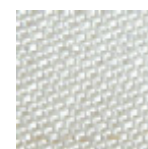
Weight: 1100 gr/m².



1100/SIL/PS

Non-flammable pre-shrunk silica fabric for applications with high temperatures (till ca. 950 °C).

Weight: 1100 gr/m².



800/HT/OR

A weavelocked glass fabric treated with a proprietary high-temperature, highly visible, orange coloured finish on both sides. Max. application temperature: 700 °C.

Weight: 810 gr/m² (coating: 10 gr/m²).



T950/HT600

Texturised glass fabric with a high-temperature finish. Max. application temperature: 600 °C.

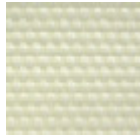

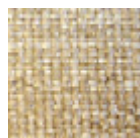
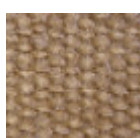
Weight: 960 gr/m² (coating: 10 gr/m²).





Temtex™ technical fabrics

9/13

<p>T1050/HT700 A heavy duty welding fabric treated with a special inorganic finish to improve the temperature- and burn-through resistance of the fabric. Weight: 1120 gr/m² (coating: 70 gr/m²).</p>	
<p>T1050/HT900/PG2 A Texo glass fabric, treated with a special "HT"-impregnation and a two-sided aluminium pigmented flame retardant coating. Weight: 1150 gr/m² (coating: 50/50 gr/m²).</p>	
<p>T600/VER/2 A lightweight welding fabric, wear resistant and suitable for high temperatures. Heat flows away along the surface of the fabric. Weight: 680 gr/m² (vermiculite coating: 70 gr/m²).</p>	
<p>T1125/VER/2 A heavy duty welding fabric, wear resistant and suitable for high temperatures. Heat flows away along the surface of the fabric. Weight: 1265 gr/m² (vermiculite coating: 140 gr/m²).</p>	



Temtex™ technical fabrics

10/13

Special Fabrics

Technical fabrics for special applications.



301/REW

Lightweight "lagging" glass fabric, impregnated throughout with a proprietary inorganic adhesive, which is dispersible in water.

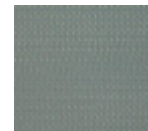
Weight: 510 gr/m² (rewettable: 210 gr/m²).



Q14/PTFE

High temperature glass fabric with a protective, water repellent and chemical-resistive Teflon™ treatment; good cutting characteristic and resistance to abrasion.

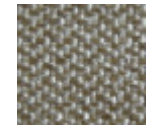
Weight: 560 gr/m².



T950/CARA

A twill-woven texturized fabric, heat-cleaned (caramelized) to reduce dusting and to flash-off the weaving additives.

Weight: 945 gr/m².





Technical fabrics accessories

11/13

Temtex™ Sewing threads

Yarns for hand and machine sewing. Also available with inconel fibres, PTFE or Kevlar coating for numerous applications.



Temtex™ Insulation Tacker

Tacker for fixing hooks manually onto insulation mattresses.



Temtex™ Quilting Tacker

Pedal-operated, table-model tacker for quilting insulation mattresses.



Accessories

A selection of hooks, washers, staples, quilting fasteners, lacing hook sets and buckles to use in production of insulation mattresses.



Lacing hook set

Consists of a 120mm pin, washer and lacing hook.



Staples

To be used in the Temtex™ insulation tacker and/or Temtex™ quilting tacker to fix hooks and plates onto technical fabrics. Available in various sizes.



Insulation hook

Available in stainless steel, nickel-plated and brass.





Technical fabrics accessories

12/13

Mattress plates

Stapled onto the opposite side of the insulation hook, it prevents the staple's sharp edge from damaging the technical fabric.



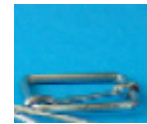
Cup head pin and Capped speed washer

USA-style quilting fasteners, lacing hooks and domed caps for installing mattresses.



Buckles

For straps on mattresses. Supplied in 25, 40 and 50mm.



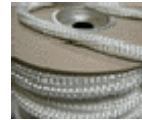


Pyroglass

13/13

Pyroglass

Glass Fibre tapes, sleeving, seals and rope lagging.



Pyroseal

An extremely flexible seal which is able to conform to tight radii without the loss of section or performance. Ideal for dry heat applications where low flange pressures are present.



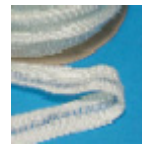
Pyrotape (Plain)

Manufactured from mechanically bulked 'E' type glass yarn and developed as an ideal medium for thermal insulation and heat sealing applications.



Pyrotape (Ladder section)

Manufactured from mechanically bulked 'E' type glass yarn and developed as an ideal medium for thermal insulation and heat sealing applications.



Pyrolag

Glass rope lagging is manufactured from a central core of glass fibre silver which is contained by an open overbraid of texturised continuous filament glass yarn.

