



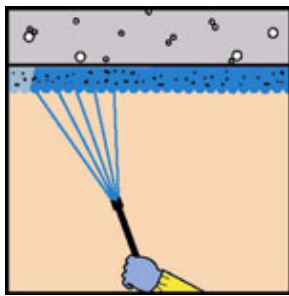
Foster® Asbestos Abatement products

The problem

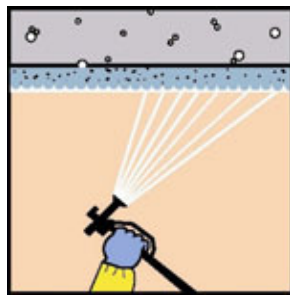
Inhalation/ ingestion of asbestos fibres is known to be a major cause of death. Life-threatening cancer (mainly Mesothelioma) can manifest itself as long as 40 years after exposure to Crocidolite, Amosite or Chrysotile fibres.

The solution

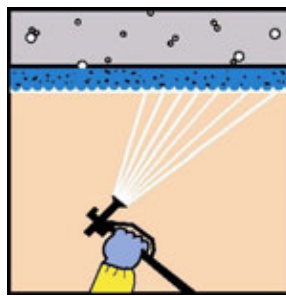
Foster® Products Corporation, international pioneer and market leader in the development of asbestos abatement products, offers a comprehensive range of specialist products for the encapsulation and removal of ACM's (Asbestos Containing Material)



PENETRATING ENCAPSULANT
Foster Protektor Sealant 32-20/21/22

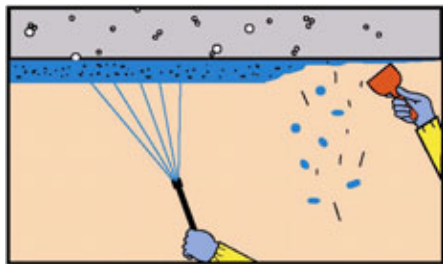


"BRIDGING" ENCAPSULANT
Foster Bridging Encapsulant 32-80

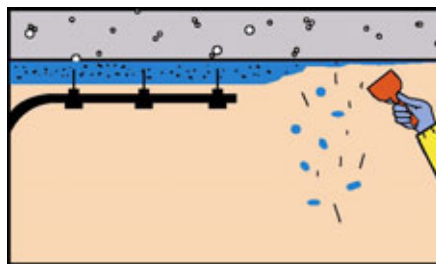


PENETRATING PLUS BRIDGING
Foster Protektor Sealant +
Foster Bridging Encapsulant

ASBESTOS CONTAINMENT NON-REMOVAL

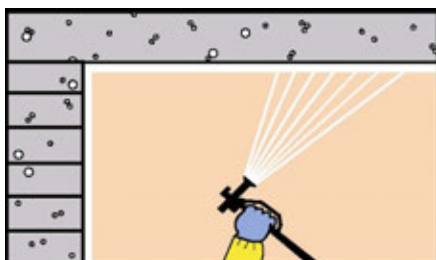


REMOVAL AFTER "WETTING OUT" BY LOW-PRESSURE AIRLESS SPRAY - Foster Removal Surfactant 32-90 or Foster Removal Encapsulant 32-60/61

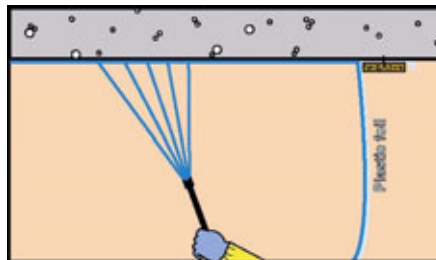


REMOVAL AFTER "WETTING OUT" BY INJECTION
Foster Removal Surfactant 32-90

ASBESTOS REMOVAL



LOCK-DOWN COATING ON WALLS/ CEILINGS
Foster Bridging Encapsulant 32-80



LOCK-DOWN SPRAY ON PERMANENT + TEMP SURFACES - Foster Protektor Sealant 32-22 or Foster Bridging Encapsulant 32-08 diluted 1:1 with clean water

POST-REMOVAL LOCK-DOWN OF RESIDUAL FIBRES



Foster[®] Asbestos Abatement products

Product Code	Product Name	Product Description	Apply by	Containment Non-Removal		Removal		Post-Removal	
				Penetrating Encapsulant	Bridging Encapsulant	Removal Surfactant	Removal Encapsulant	Post-removal Lock-down coating	Post-removal Residual fibre lock-down
32-20 32-21 32-22	Protektor Sealant Yellow/ blue/ untinted	Single-component penetrating encapsulant penetrates deeply into porous, low-density ACM's. Dries to a firm, damage-resistant mass. Protektor blue and yellow can be used in 2 separate applications to ensure optimal coverage. Also used as a post-removal residual fibre lock-down .	Low pressure airless spray	± 1 ltr/m ² per cm thickness	N/A	N/A	N/A	N/A	0,1 to 0,25 l/m ² (NB – use untinted version 32-22)
32-80	Bridging Encapsulant Off-white	Single-component bridging encapsulant When dry, 32-80 forms a tough, abrasion-resistant, washable, elastomeric bridging encapsulant over sprayed and conventional ACM's. Undiluted Foster 32-80 is also used as a post-removal coating on walls and ceilings. When diluted to a max of 1:1 with clean water, 32-80 is an extremely effective post-removal residual-fibre lock-down on permanent and temporary surfaces (containment enclosures).	Heavy duty spray equipment or brush	N/A	± 1,5 – 2 ltr/m ²	N/A	N/A	± 1,5 ltr/m ²	± 0,1 ltr/m ² (before dilution 1:1 with water)
32-90	Removal Surfactant Concentrate clear	Specially formulated, concentrated removal-surfactant with excellent penetration properties, effectively "wetting-out" Amphobiles, Amosite and Crocidolite even at the max. dilution ratio of 25:1 (water:surfactant)	Low pressure airless spray	N/A	N/A	± 0,2 ltr/m ² concentrate per 5cm thickness, based on dilution 1:25 with water.	N/A	N/A	N/A
32-60 32-61	Removal Encapsulant Blue/ clear	Single-component, highly effective ready-to-use removal surfactant and encapsulant. Foster 32-60 readily "wets-out" the individual fibres (also airborne fibres) and locks them together. Also effective as a post-removal residual-fibre lock-down .	Low pressure airless spray	N/A	N/A	N/A	± 1ltr/m ² per cm thickness	N/A	0,1 to 0,25 l/m ² (NB – use clear version 32-61)

N.B. As all ACM's have varying densities, porosity and absorbency rates, above coverage rates are given as an indication only; on site testing is required to determine actual quantity requirements.

OTHER FOSTER ABATEMENT PRODUCTS

- 32-47** Floor tile-Adhesive Remover – Softens most single-component, asbestos-containing, floor tile- and carpet adhesives and –backings, preventing release of hazardous fibres during removal.
- 32-56** Spray Poly – A water-based, film forming, sprayable coating for walls/ ceilings to replace poly-foil enclosures. Upon completion of the abatement activities Spray Poly is simply stripped off.
- 32-08** Soil Encapsulant – Sprayable water-based (watery) elastomeric penetrating-encapsulant to bind dry, coarse, asbestos-containing soil, to form a bonded surface-layer and encapsulate loose fibres.
- 84-20** Hi-Temp Lock-Down – silica-based sprayable/brushable sealer to lock-down residual fibres on hot surfaces (up to 1200 degrees Celsius) from which asbestos has been removed, e.g. turbines, boilers, etc.