



V.I.P.



Vessel Inspection Plug

- The V.I.P. makes non-destructive inspection economical
- Reduces inspection costs/ time
- Weather-tight seal
- High temperature silicone plug
- Helps to prevent Corrosion under Insulation (C.U.I.)



V.I.P. - Vessel Inspection Plug

Product Description

Moisture in insulation systems leads to deterioration of insulation and corrosion of vessel or pipe, thus causing major problems.

Inspection of insulation and vessel on a regular base is essential to prolong lifetime of system.

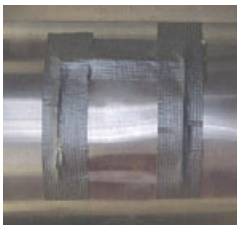
Newly installed insulation always contains a certain content of water and often the metal jacketing is damaged during maintenance jobs when piping is climbed over or stood on, disrupting the water-seal of the jacketing. Cutting an opening in the jacketing and sealing again with tape is not a durable solution and can cause many problems.

The best way to inspect for corrosion under insulation (C.U.I.) in a non-destructive way, is the V.I.P. Vessel Inspection plug, available in two standard types 2½" and 5". (Hydraulic Punch Driver and tool-head for easy installation can also be provided) The V.I.P. also provides possibility for electronically measuring thickness of pipe/vessel walls.

Cost Saving Benefits of the V.I.P. Vessel Inspection Plug

- Reduces inspection costs
- Reduces inspection time
- Provides ready access for inspection with minimum exposure to vessel insulation
- High visibility
- Provides a consistent inspection point ensuring that future inspections are taken at the same location
- Inspection ports can be bar coded for data log entry
- Maintains a weather-tight seal to protect insulation
- High temperature silicone plug provides long service life

problem



solution



Installing the V.I.P.

1. Cut hole through insulation jacket with hole-saw to correspond with plug-size to be installed.
2. Remove insulation and clean external surface.
3. Slide rubber "O"-ring over aluminium flange.
4. Insert flange (with "O"-ring applied) into hole on vessel insulation.
5. Insert hydraulic tool into flange. Close valve on tool. Make sure tool is level.
6. Pump handle approximately 5 times. Open the valve. Remove the tool.
7. Replace insulation into hole, insert V.I.P. Plug into hole.
8. Make sure plug is fully seated by depressing centre of plug firmly with thumb or fingers.
9. Plug is now correctly installed and ready for periodic vessel inspection operation.

Specifications

Sizes	2½" and 5"
Plug material	Std. MTL 40 Durometer silicone rubber
Temp. range	-60°C. tot+ 260°C
Std. Colour	Orange
Eyelet Material	5052 Aluminium

Other plug colours and materials available on a special order basis.