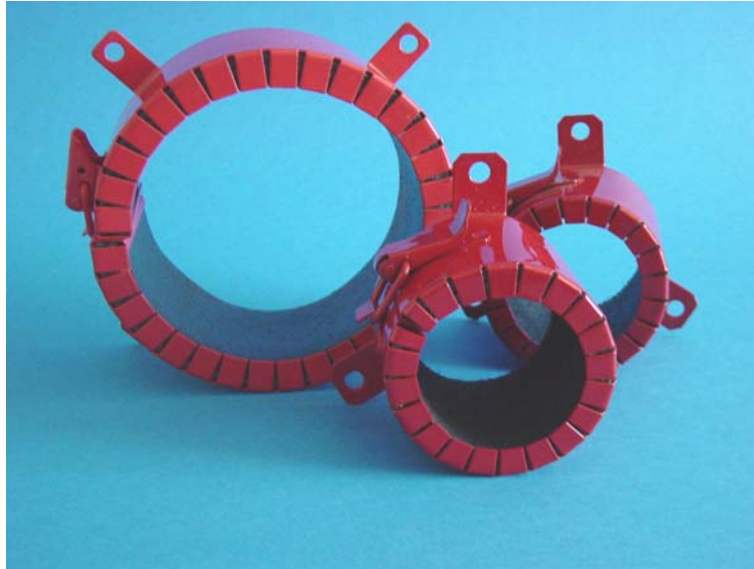




Intumescent fire collars



- **Easy to install**
- **Suitable for sealing UPVC, Polypropylene, HDPE and ABS plastic**
- **Maintenance Free**
- **Tested according to European Standard EN 1366-3 : 2004**
- **Available to suit pipe sizes ranging from 55 to 355mm O.D.**



Description

Fire Stop Collars provide a simple and effective method of firestopping plastic pipework where it passes through compartment walls and floors. The Fire Collars consist of a powder coated steel sleeve containing a flexible graphite based intumescent liner manufactured to suit the pipework to be firestopped. Integral toggles are opened up and the collar is simply fitted around the plastic pipe. The toggles are closed and the collar is pushed flush to the surface of the wall or underside of floor. The collar is then securely fastened to the structure by means of fire resistant fixings threaded through fixing tabs. Any gaps of up to 25mm wide around the pipework should be filled with PFC Corofil Acoustic Intumescent Sealant. For gaps greater than 25mm PFC Corofil Firestop Compound can be used. Under fire conditions the intumescent material swells filling the void left by the burnt out plastic.

Fire Rating

Pipe size (mm)	Plastic type	Pipe wall (mm)	Thickness of intum/ depth (mm)	Wall/ floor/ plasterboard	Integrity (mins)	Insulation (mins)	BS/EN Or R&D
55	mUPVC	2.5	4	Concr. floor	265	265	EN
	ABS		5 x 60	130mm PB	132	125	EN
			8 x 60	Concr. floor	134	129	EN
	HDPE	3.1	5 x 60	130mm PB	124	63	EN
			8 x 60	Concr. floor	240	240	EN
60	Polyprop	6.5	8 x 60	Concr. Floor	265	265	EN
	Polyprop		8 x 60	130mm PB	132	132	EN
82	PVC	2.5	8 X 60	Concr. floor	240	240	EN
110	PVC	5	20 x 35	130mm PB	132	132	EN
			15 x 40	Concr. floor	138	-	R&D
			8 x 60	Concr. floor	240	-	R&D
			15 x 60	Concr. floor	149	-	R&D
			8 X 60	Concr. floor	220	220	
			8 x 12	Concr. floor	223	223	
	Polyprop	5.5	8 x 60	Concr. floor	195	195	
	Polyprop	5.5	8 x 12	Concr. floor	198	198	
160	PVC	5.0	20 x 60	Concr. floor	265	265	
			20 x 60	Concr. floor	265	265	
168	Polyprop	9.0	21 x 60	130mm PB	132	132	EN
			21 x 60	130mm PB	132	132	EN
			20 x 60	Concr. floor	265	265	EN
160	HDPE	6.5	18 x 60	130mm PB	132	128	EN
			16 x 60	130mm PB	63	26	EN
			16 x 60	Concr. floor	72	72	EN
			24 x 60	Concr. floor	240	240	EN