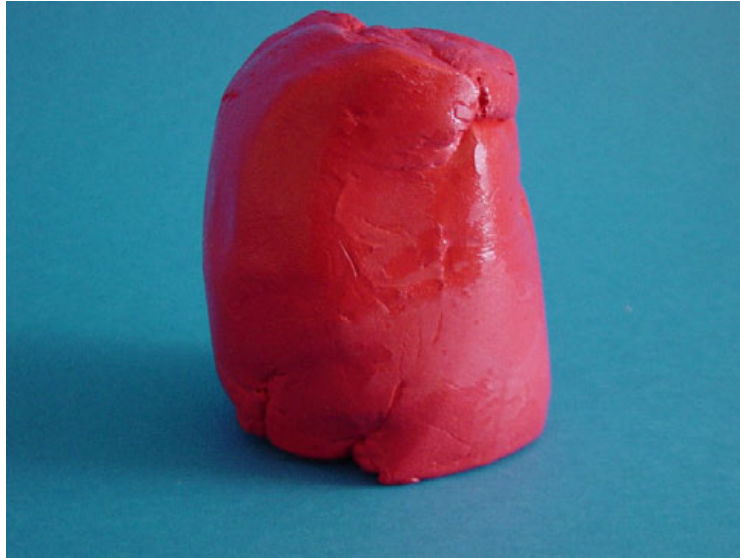




Intumescent silicone putty



graphite impregnated silicone-based compound

- **Easy to apply**
- **Non-setting and re-usable**
- **Tested to EN 1366-3**



Description

PFC Corofil Intumescent Silicone Putty is a non-setting, malleable graphite impregnated silicone-based compound.

Non-hazardous, the putty is simply moulded around cable and metal services in masonry walls and concrete floors to a minimum depth of 150mm. Additional services can be simply installed by pulling out the putty and reforming it around the new service.

PFC Corofil Intumescent Silicone Putty can easily be removed used and re-used; its flexibility allows it to be used around complex and irregular shapes.

PFC Corofil Intumescent Silicone Putty is ideal for sealing electrical and telecommunication service penetrations, including metal cable trunking and conduits.

Characteristics

Depth of putty	Hole size	Penetrating services	Wall/ floor/ plasterboard	Integrity (mins)	BS/EN Or R&D
50	20mm annular gap	110mm cast iron pipe	50mm thick Batt in Block wall. Batt filled in hole sized in block.	240	EN
80	100 x 100 steel trunking	Shed loads of cables	Part of pillow test in 600 x 600mm hole in block	240	R&D

Availability

PFC Corofil Intumescent Silicone Putty is red in colour and is supplied in 1kg tubs.