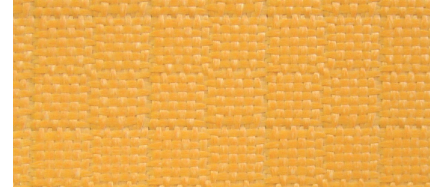




TEMTEX™ 800/HT/OR



Description	A weavelocked glass fabric treated with a proprietary high-temperature, highly visible, orange coloured finish (2-sided).		
Applications	- Welding shields		- Spark-/welding protection
Approvals			
Characteristics of Temtex 800/HT/OR			Test method
Total weight	g / m ²	810	± 5%
Width (std)	mm	1000	± 10
Thickness	mm	0.80	± 0.10
Roll length (std)	m	50	
Max. application temperature	°C	700	
Remarks			

Fabric structure				
	Unit	Data	Tolerance	Test method
Base fabric		E-Glass		
Weight	g / m ²	800	± 5%	DIN 53854
Weave		Check		
Setting	per cm	14.0 x 14.0	± 3%	DIN 53853
Warp	Tex	EC9-272	± 5%	DIN 60850 T.2
Weft	Tex	EC9-272	± 5%	DIN 60850 T.2
Tensile strength (warp x weft)	N/cm	1650 x 1650	± 10%	DIN 53857
Coating / Finish	-	High Temperature		
Weight	g / m ²	10	± 5%	
Single-/double sided		2		

Tensile strength data refers to loomstate fabrics. Stability, thickness and surface weight vary according to the type of fabric finish. The given values are approximate and not guaranteed.

TEM12/01