



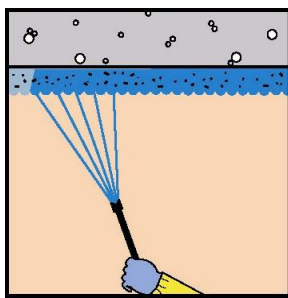
# Foster® Asbestos Abatement products

## The problem

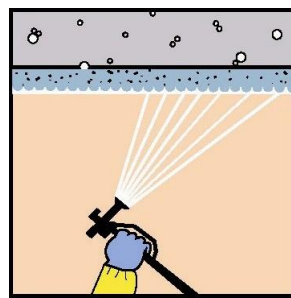
Inhalation/ ingestion of asbestos fibres is known to be a major cause of death. Life-threatening cancer (mainly Mesothelioma) can manifest itself as long as 40 years after exposure to Crocidolite, Amosite or Chrysotile fibres.

## The solution

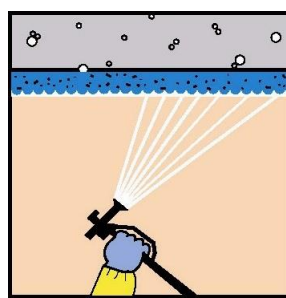
Foster® Products Corporation, international pioneer and market leader in the development of asbestos abatement products, offers a comprehensive range of specialist products for the encapsulation and removal of ACM's (Asbestos Containing Material).



PENETRATING ENCAPSULANT  
Foster Protektor Sealant 32-20/ 21/ 22

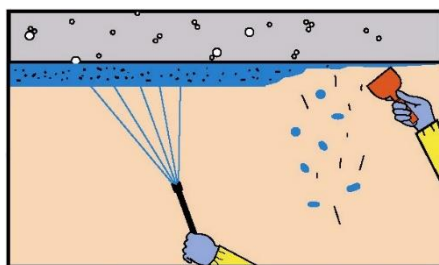


"BRIDGING" ENCAPSULANT  
Foster Bridging Encapsulant 32-80

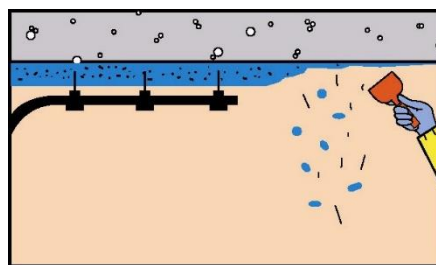


PENETRATING PLUS BRIDGING  
Foster Protektor Sealant +  
Foster Bridging Encapsulant

## ASBESTOS CONTAINMENT NON-REMOVAL

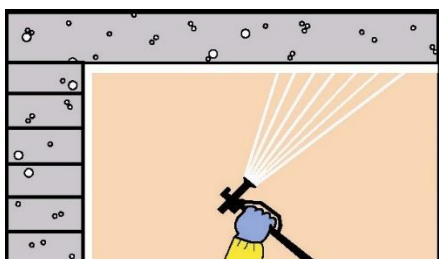


REMOVAL AFTER "WETTING OUT" BY LOW-PRESSURE  
AIRLESS SPRAY - Foster Removal Surfactant 32-90 or  
Foster Removal Encapsulant 32-60/ 61

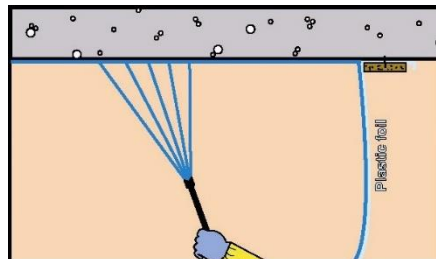


REMOVAL AFTER "WETTING OUT" BY INJECTION  
Foster Removal Surfactant 32-90

## ASBESTOS REMOVAL



LOCK-DOWN COATING ON WALLS/ CEILINGS  
Foster Bridging Encapsulant 32-80



LOCK-DOWN SPRAY ON PERMANENT + TEMP  
SURFACES - Foster Protektor Sealant 32-22 or Foster  
Bridging Encapsulant 32-80 diluted 1:1 with clean water

## POST-REMOVAL LOCK-DOWN OF RESIDUAL FIBRES



## Foster<sup>®</sup> Asbestos Abatement products

Product Code	Product Name	Product Description	Apply by	Containment Non-Removal		Removal		Post-Removal	
				Penetrating Encapsulant	Bridging Encapsulant	Removal Surfactant	Removal Encapsulant	Post-removal Lock-down coating	Post-removal Residual fibre lock-down
32-20 32-21 32-22	<b>Protektor Sealant</b> Yellow Blue Transparent	Single-component <b>penetrating encapsulant</b> penetrates deeply into porous, low-density ACM's. Dries to a firm, damage-resistant mass. Protektor blue and yellow can be used in 2 separate applications to ensure optimal coverage. Also used as a <b>post-removal residual fibre lock-down</b> .	Low pressure airless spray	± 1 ltr/m <sup>2</sup> per cm thickness	<b>NOT APPLICABLE</b>	<b>NOT APPLICABLE</b>	<b>NOT APPLICABLE</b>	<b>NOT APPLICABLE</b>	0,1 to 0,25 l/m <sup>2</sup> (NB – use transparent version 32-22)
32-80	<b>Bridging Encapsulant</b> Off-white	Single-component <b>bridging encapsulant</b> When dry, 32-80 forms a tough, abrasion-resistant, washable, elastomeric <b>bridging encapsulant</b> over sprayed and conventional ACM's. Undiluted Foster 32-80 is also used as a <b>post-removal coating</b> on walls and ceilings. When diluted to a max of 1:1 with clean water, 32-80 is an extremely effective <b>post-removal residual-fibre lock-down</b> on permanent and temporary surfaces (containment enclosures).	Heavy duty spray equipment or brush	<b>NOT APPLICABLE</b>	± 1,5 – 2 ltr/m <sup>2</sup>	<b>NOT APPLICABLE</b>	<b>NOT APPLICABLE</b>	± 1,5 ltr/m <sup>2</sup>	± 0,1 ltr/m <sup>2</sup> (before dilution 1:1 with water)
32-90	<b>Removal Surfactant Concentrate</b> Transparent	Specially formulated, concentrated <b>removal-surfactant</b> with excellent penetration properties, effectively "wetting-out" Amphobiles, Amosite and Crocidolite even at the max. dilution ratio of 25:1 (water:surfactant)	Low pressure airless spray	<b>NOT APPLICABLE</b>	<b>NOT APPLICABLE</b>	± 0,2 ltr/m <sup>2</sup> concentrate per 5cm thickness, based on dilution 1:25 with water.	<b>NOT APPLICABLE</b>	<b>NOT APPLICABLE</b>	<b>NOT APPLICABLE</b>
32-60 32-61	<b>Removal Encapsulant</b> Blue Transparent	Single-component, highly effective ready-to-use <b>removal surfactant</b> and encapsulant. Foster 32-60 readily "wets-out" the individual fibres (also airborne fibres) and locks them together. Also effective as a <b>post-removal residual-fibre lock-down</b> .	Low pressure airless spray	<b>NOT APPLICABLE</b>	<b>NOT APPLICABLE</b>	<b>NOT APPLICABLE</b>	± 1ltr/m <sup>2</sup> per cm thickness	<b>NOT APPLICABLE</b>	0,1 to 0,25 l/m <sup>2</sup> (NB – use clear version 32-61)

**N.B.** As all ACM's have varying densities, porosity and absorbency rates, above coverage rates are given as an indication only; on site testing is required to determine actual quantity requirements.

### OTHER FOSTER ABATEMENT PRODUCTS

**32-47** Floor tile-Adhesive Remover – Softens most single-component, asbestos-containing, floor tile- and carpet adhesives and –backings, preventing release of hazardous fibres during removal.

**84-20** Hi-Temp Lock-Down – silica-based sprayable/brushable sealer to lock-down residual fibres on hot surfaces (up to 1200 degrees Celsius) from which asbestos has been removed, e.g. turbines, boilers, etc.